



Global Corporate Venturing  
**Leadership Society**

# Contents

03	WHAT WE DO
04	LEADERSHIP SOCIETY
05	OUR REACH
06	WHY WE'RE HERE
07	WHY YOU SHOULD JOIN
08	WHAT YOU'LL GET



# What we do

At Global Corporate Venturing, CVC is at the heart of everything we do. Our mission; to unify and serve the CVC ecosystem. We believe in the staying power of CVCs. We're a central hub where those serious about venture investing, building and clienting can go to learn, connect and exchange ideas.

**GCV is where global innovation and corporate capital meet**

# What is The Leadership Society?

The Leadership Society is our global CVC membership community, bringing together corporate venture capitalists to advance investing, innovation and venture building in future technologies. We have three membership levels: Newly-formed CVCs, Premium and Luminary.

Our members shape the future of corporate investing and innovation

Our members are leaders in CVC

3M Ventures ○ ABB Technology Ventures ○ AC Ventures ○ Aerospace Xelerated (Boeing) ○ Allstate Strategic Partners ○ Amazon Web Services ○ Anglo American Ventures ○ Anglo American ○ Aramco Ventures ○ Avanta Ventures ○ BAE Ventures ○ BCF Ventures ○ BCD Capital ○ Bidra Ventures ○ Blackberry Ventures ○ BlueScopeX Ventures ○ The Blue Venture Fund ○ Booz Allen Hamilton Ventures ○ bp Ventures ○ BTomorrow Ventures ○ Cargill Ventures ○ Caterpillar Ventures ○ Channel 4 Ventures ○ Chevron Technology Ventures ○ Citi Group ○ CMPC Ventures ○ Compass Digital Ventures ○ Decarbonization Partners ○ Delek Ventures ○ Denso Ventures ○ Deutsche Bank Ventures ○ Echo Health Ventures ○ Emirates NBD ○ EnBW Ventures ○ ENGIE New Ventures ○ Ensemble Innovation Ventures ○ Enterprise Mobility Ventures ○ Evonik Ventures ○ EWE AG Ventures ○ Fujitsu Laboratories of America ○ GC Ventures America ○ GM Ventures ○ GS Futures ○ HG Ventures (The Heritage Group) ○ Hitachi Ventures GmbH ○ Honda Innovations ○ IBM Ventures ○ In-Q-Tel Ventures ○

○ InMotion Ventures ○ International Airlines Group Ventures ○ JERA Ventures ○ JetBlue Technology Ventures ○ JLL Spark Global Ventures ○ Kyocera AVX Ventures ○ LAM Capital ○ Lilly New Ventures ○ M12 Ventures (Microsoft) ○ Magna International ○ M Ventures (Merck) ○ Milliken & Co. Ventures ○ Mobis Ventures Silicon Valley ○ Mondelez Global LLC Ventures ○ MS&AD Ventures ○ Munich Re Ventures ○ National Grid Partners ○ NEOM Ventures ○ Next176 Ventures (Old Mutual) ○ Nikon Ventures ○ Noblis Ventures ○ NGP Capital (Nokia) ○ Oxy Technology Ventures (Occidental Petroleum) ○ PWC Ventures ○ QBE Ventures ○ Qualcomm Ventures ○ RTX Ventures Raytheon Technologies ○ SABIC Ventures ○ Sabanci Climate Ventures ○ SAIC VC ○ Saint-Gobain (NOVA External Ventures) ○ Samsung Catalyst Fund ○ Samsung Next ○ SC Ventures ○ Schreiber Foods ○ Shell Ventures ○ Siemens Energy ○ Simpson Strong-Tie ○ SLB New Energy (Schlumberger) ○ Sopra Steria Ventures ○ Sony Ventures ○ Specialty Operations France ○ SRI International Ventures ○ Stanley Ventures ○ Swisscom Ventures ○ TDK Ventures ○ Telus Ventures ○ Tencent Ventures ○ Technip Energies ○ Thomson Reuters Ventures ○ Tupras Ventures ○ United Airlines Ventures ○ VERBUND Ventures ○ WERU Investment Fund ○ WESTCO Ventures ○ World Fuel Services Ventures ○ Woven Capital Ventures ○ Wren ○ XCarb Innovation Fund ○ Yamaha Ventures ○ Zillion Technologies Ventures

# Our reach

- Atlanta
- Bangalore
- Buenos Aires
- Chicago
- Estonia
- Finland
- Frankfurt
- Houston
- Indianapolis
- London
- Menlo Park
- Mexico City
- Miami
- Monterey
- New York
- Paris
- Sao Paulo
- Seoul
- Tokyo



We've held meetings for CVC leaders across the globe

# Why we're here

## An independent members group, just for corporates who invest, build and innovate

Over ten years ago, we responded to a market need to bring corporates together and form a community where they can share, learn, and implement best practice in venture investing, building and clienting.

When you join the Leadership Society, you're not joining an association who lobbies for the interests of PE and VC. You're joining a global community that exists just for corporates who invest in and work with startups.

## Inclusive, for all corporate investors and CVCs

We take a sector agnostic and global approach. We believe that everyone should benefit from the power of community learning.

Whether you're thinking of starting CVC, a newly-formed unit, or an industry veteran, we've got the right membership option for your team.



# Why you should join



Our membership is designed to give you the most comprehensive offering possible

- Access news, analysis and proprietary datasets exclusive to GCV
- Attend and network at premier events the world's most influential corporate investors
- Learn new investing and innovation skills at the GCV Institute
- Elevate your portfolio's profile to expand your customer base and enhance deal-flow opportunities
- Join global communities driving progress in key sectors and industries

What you'll get

## EVENTS TICKETS

GCV run corporate investing and innovation events accross the globe, and you're invited

Whether it's Monterey, London, Brazil or Toyko, as a member of The Leadership Society, you'll have the option to choose the GCV event that holds the most value to you.

You'll also be given priority access to our regional Connect events - designed to open up new and exciting venture markets.

Member level	Number of tickets included	Additional discount*	Portfolio company showcase at event
Newly-formed CVCs	1	15%	n/a
Premium level	2	20%	✓
Luminary Level	4	25%	✓

\*Greater savings on group ticket packages: Contact your relationship manager.



Check out our events





# Events 2025

- FLAGSHIP EVENTS
- CONNECT EVENTS

JAN

FEB

CONNECT INDIA

MAR

GCVI SUMMIT | MONTEREY | 18TH - 20TH

APR

MAY

JUN

SYMPOSIUM | LONDON | 18TH - 19TH

JUL

AUG

SEP

CONNECT HOUSTON  
CONNECT NEW NORDICS

OCT

CONNECT GERMANY  
ELF | NEW YORK  
CORPORATE VENTURE IN BRASIL | 20TH - 22ND

NOV

ASIA | JAPAN

DEC

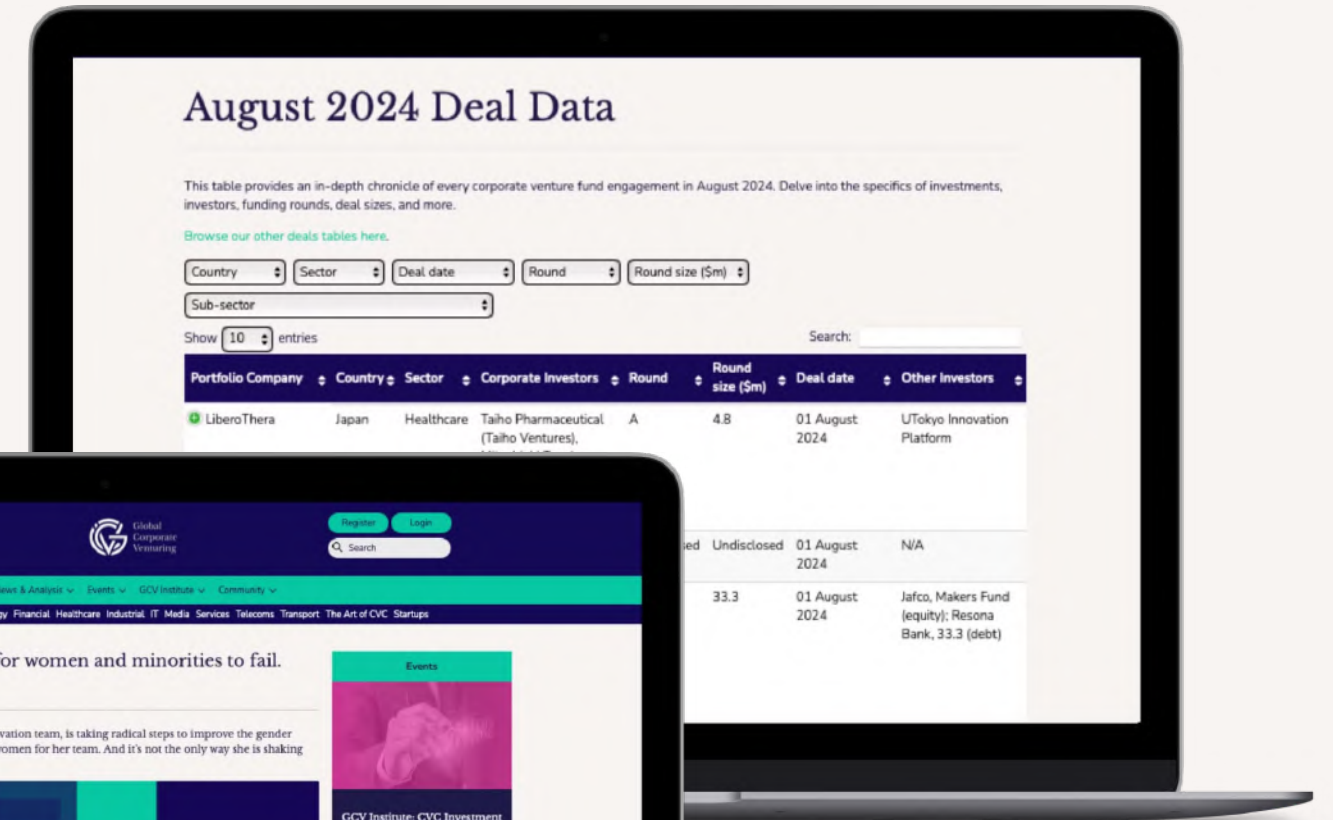
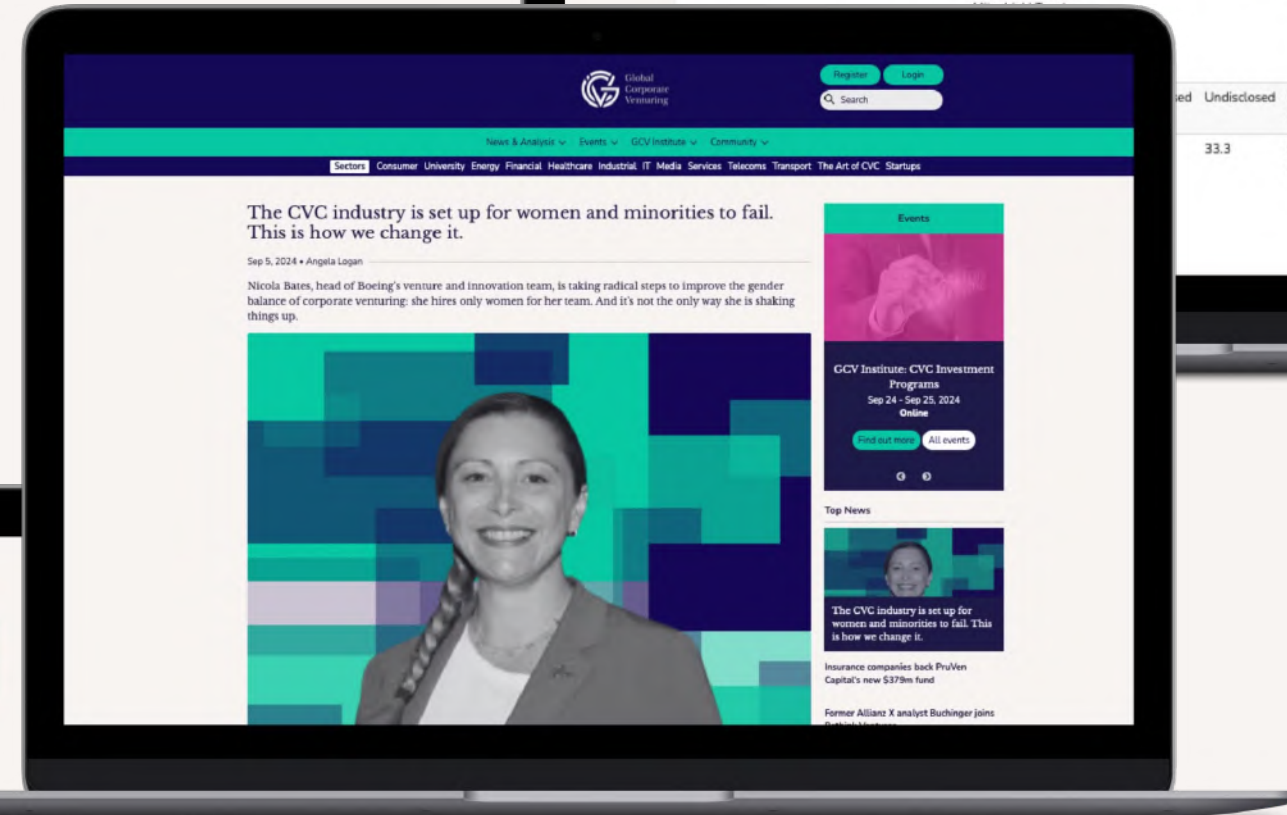
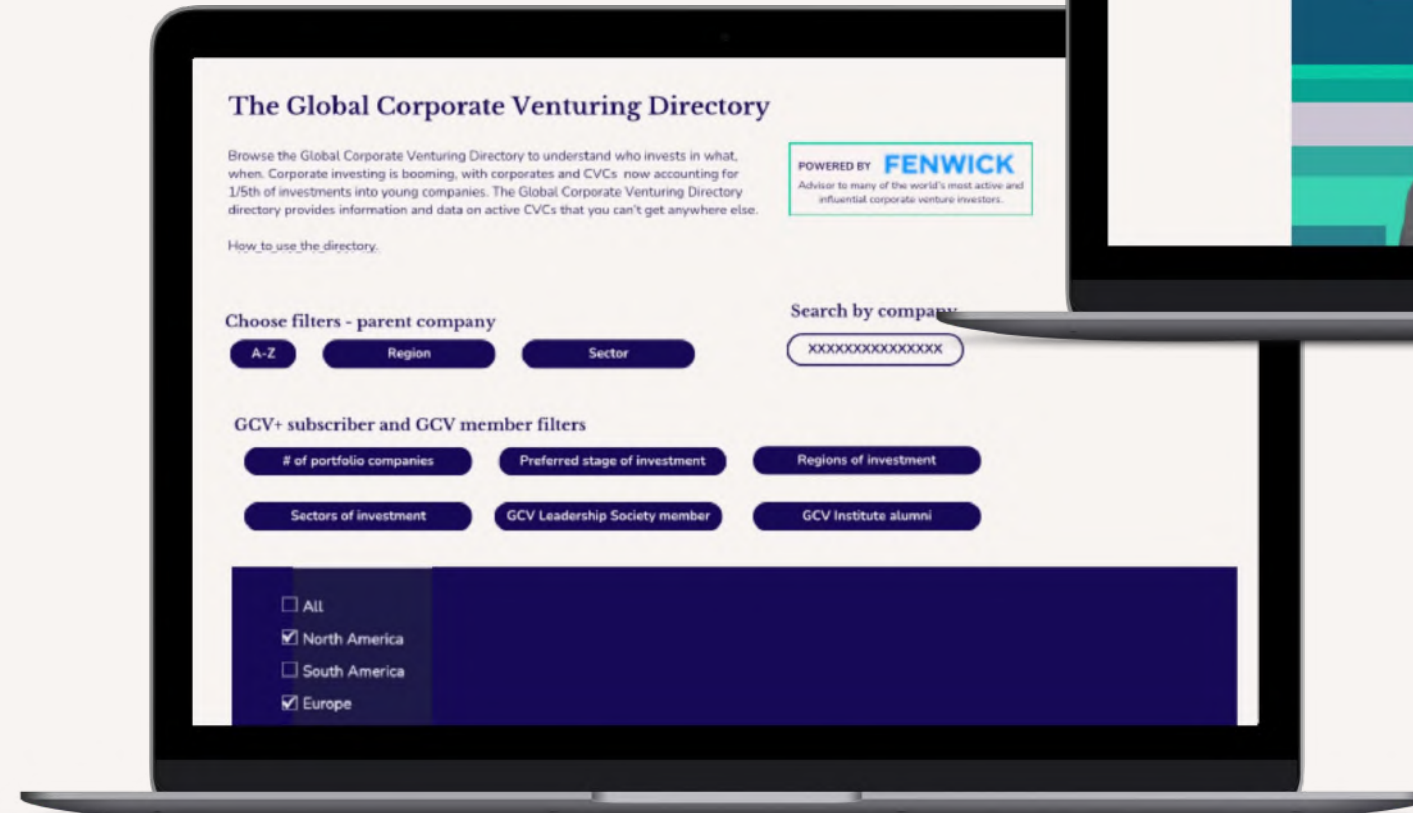


What you'll get

## NEWS, ANALYSIS AND DATABASES

### Get behind the paywall

Leadership Society membership gets you behind the wall with unlimited access to our news, views, analysis two proprietary databases and a CVC directory.



Member level	Number of subscriptions
Newly-formed CVCs	2 users
Premium level	Unlimited user access
Luminary Level	Unlimited user access

What you'll get

## PROFESSIONAL DEVELOPMENT

### Get certified and learn best-practices

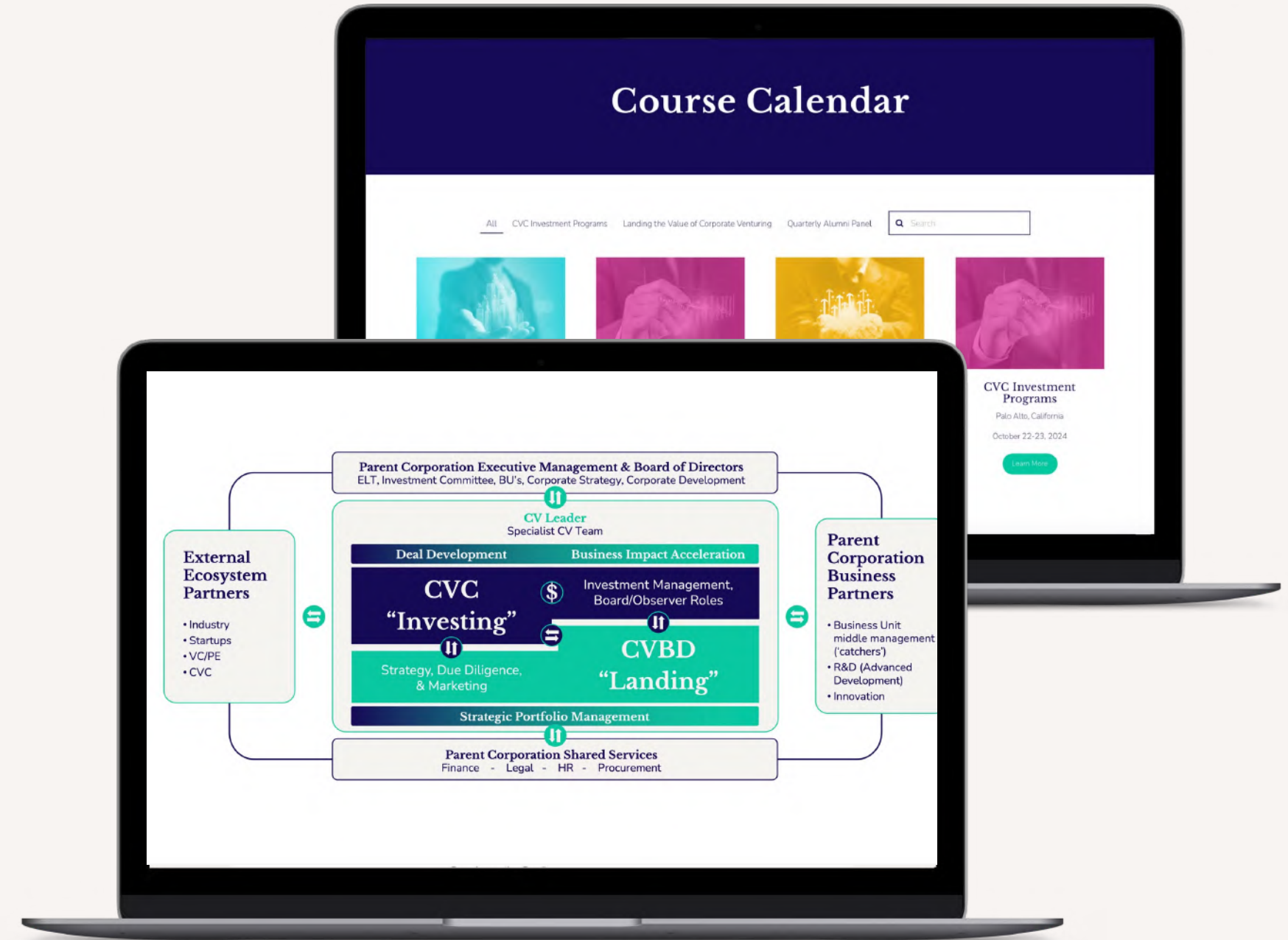
We understand that CVC is different from VC, that's why the GCV Institute enhances professional development **specifically for CVCs** and corporate investors. The Institute arms participants with the common language, tools and best practices for corporate startup investment and partnering.

The curriculum provides a combination of case studies, cohort-based learning and mentored problem solving.

Your Leadership Society membership gives you a voucher to use on **any of our Institute courses** during your membership tenure.

About the Institute

Institute courses



Member level	Institute credit value	Additional discount %
Newly-formed CVCs	\$1,800	10%
Premium level	\$2,500	10%
Luminary Level	\$3,000	10%

# What you'll get

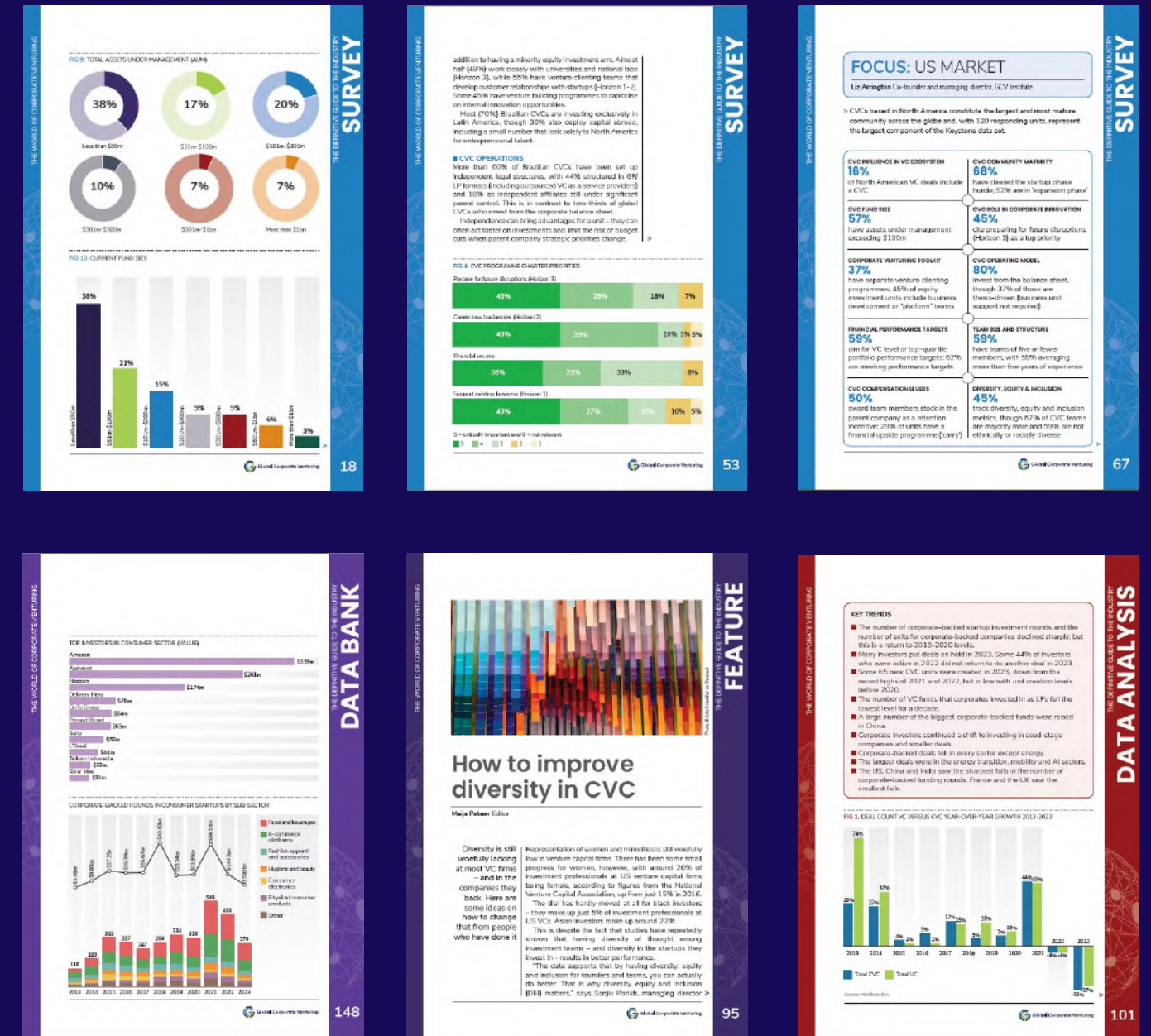
## BENCHMARKING AND ADVISORY

### What does good look like, anyway?

Use your Institute credit towards our benchmarking and advisory service. GCV Keystone benchmarking delivers operational and performance data to the Institute's professional development curriculum. By using our proprietary Keystone data, we can help you solve what "good" look like, to guide your decision-making on CVC program creation, expansion, or redirection.

Our **annual CVC benchmarking report** - the ecosystems biggest and most in-depth - is included in your Leadership Society membership.

What's more, you can benefit from getting your own custom data-slice or advisory project at a discount as a member.



Member level	Annual report	Discount % on Keystone benchmarking
Newly-formed CVCs	✓	10%
Premium level	✓	15%
Luminary Level	✓	15%



# What you'll get

## ALL IMPORTANT EXTRAS

Additional extras that make the Leadership Society one of a kind

### **Attend intimate events**

Including Women in Venture and all Connect events, as a member you get priority access to all GCV community networking

### **Advisory board (by invitation)**

Benefit from steering the future of GCV activities

### **GCV member councils**

Connect and explore innovation and investment opportunities within a specific sector

### **Communities of practice**

Programmes to bring together operational leaders in CVC

### **Portfolio company showcase**

Want your PortCos to receive CVC attention? They'll have the opportunity to showcase at a flagship event\*

### **Institute Alumni networking**

We help you stay in contact with the people you meet on our courses

\*Please note: The number of PortCos showcased is membership level and event type dependent.  
Please consult your relationship manager for more information.





Global Corporate Venturing  
**Leadership Society**

Ready to join us?

CONTACT

Janice Mawson

[janicemawson@globalventuring.com](mailto:janicemawson@globalventuring.com)

Amber Knapp

[aknapp@globalventuring.com](mailto:aknapp@globalventuring.com)